

Tour code:CLXA08



NO SHOPPING
无购物

★ 行程亮点

- 布达拉宫
- 大昭寺
- 卡若拉冰川
- 羊卓雍措
- 珠峰大本营
- 扎基寺

🍽️ 餐食

6早餐 | 6午餐 | 6晚餐

特色餐：

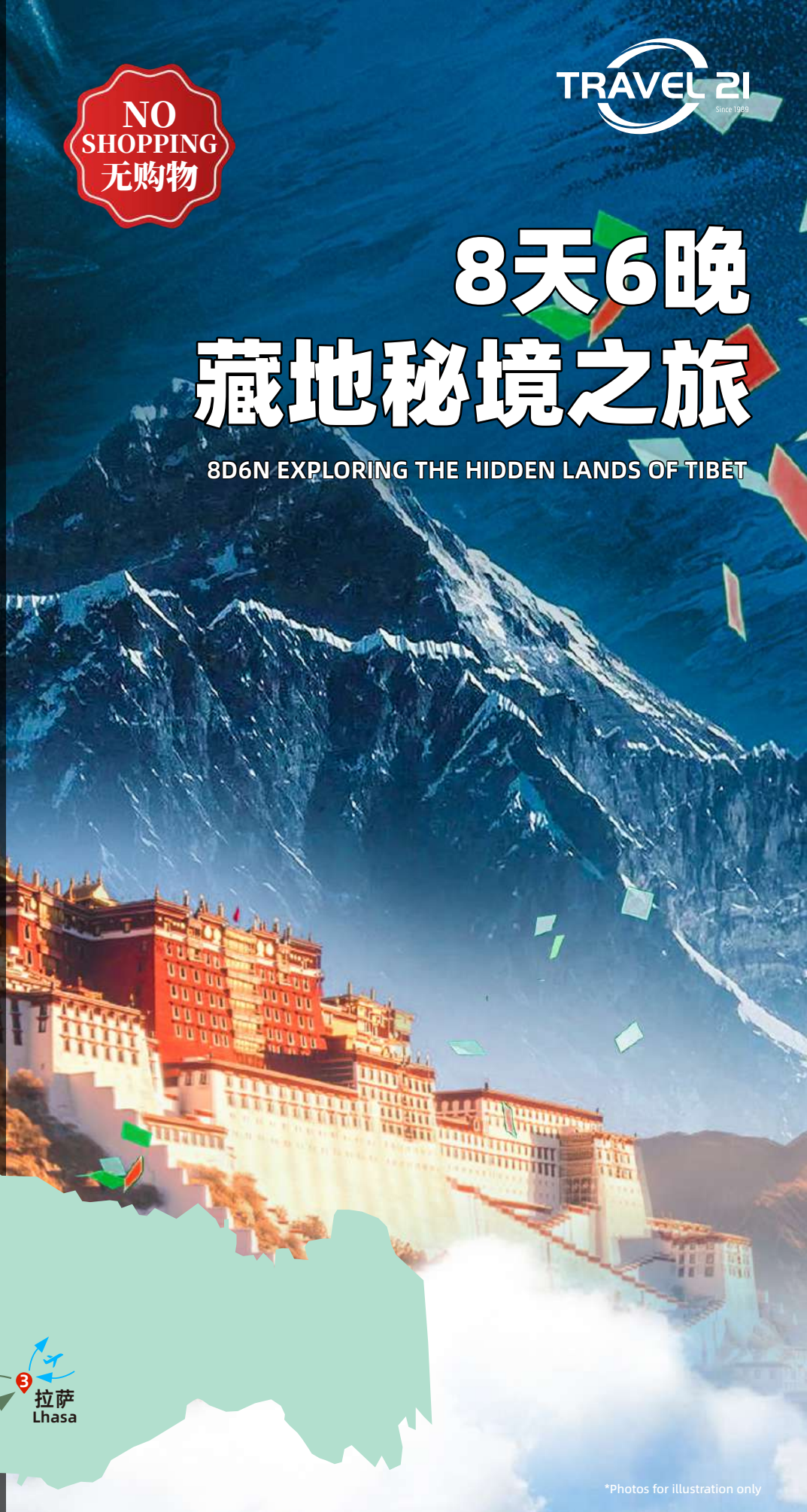
特色藏餐 / 尼泊尔餐 / 中式合菜

🏨 酒店住宿

- 拉萨(3晚)
- 日喀则(2晚)
- 巴松村

8天6晚 藏地秘境之旅

8D6N EXPLORING THE HIDDEN LANDS OF TIBET



西藏
XIZANG



*Photos for illustration only



☎ 6587 0058 / 6533 2198 📞 8856 5111 ✉ ask@travel21.com.sg

Office: 101 Upper Cross Street, B1-12 | 17A, People's Park Centre, Singapore 058357

(TA01114)



01 出境✈️拉萨

机上用餐 | 晚餐

- 拉萨接机，送入酒店休息。

酒店:拉萨

02 拉萨

早餐 | 午餐 | 晚餐

- **布达拉宫**巍然立于红山之上，白墙与红宫层层叠起，在高原的蓝天之下显得庄严而神圣。阳光掠过金顶，光芒静静流转
- **大昭寺广场**广场铺展在古老寺庙之前，阳光洒落，石板泛着温暖的光
- **八廓街**环绕古寺而行的街道，青石路被岁月打磨得温润发亮

酒店:拉萨



03 拉萨🚗日喀则

早餐 | 午餐 | 晚餐

- **拉萨**高原之上，阳光明媚而纯净，整座城市在蓝天下显得格外通透。
- **羊卓雍措**湖水如一抹湛蓝铺展在群山之间，随光线变幻出层层深浅。
- **卡若拉冰川**冰川从山体倾泻而下，像凝固的瀑布悬挂在天地之间。阳光照耀下，冰层泛着幽蓝与银白的光。
- **满拉水库**湖水清澈碧蓝，雪山与草原倒映其间，景色纯净开阔。
- **日喀则**高原的风在这里更加辽阔，阳光明媚而纯粹。城市静静铺展在群山与河谷之间，金顶与白墙在远处闪耀。

酒店:日喀则



04 日喀则🚗巴松村

早餐 | 午餐 | 晚餐

- **珠峰大本营**群山环绕、雪峰巍峨，云雾与阳光交织变幻。
- **巴松村**坐落于高原湖畔与雪山之间，环境宁静纯粹。村落保留着原始藏式风貌

酒店:巴松村

05 巴松村🚗日喀则

早餐 | 午餐 | 晚餐

- **加乌拉山口**站在加乌拉山口，天地豁然展开，群山在脚下层层铺陈。远方雪峰连绵起伏，云影在山脊间缓缓流动。

酒店:日喀则



羊卓雍错

06 日喀则 🚗 拉萨

早餐 | 午餐 | 晚餐

- **扎什伦布寺**依山而建的寺院层层展开，金顶在高原阳光下熠熠生辉。经幡随风轻动，诵经声在院落间回荡。

酒店:拉萨

07 拉萨 ✈️ 温馨的家

早餐 | 午餐

- **扎基寺**隐在拉萨街巷之间的小寺院，香火却格外热闹。人们带着青稞酒与心愿而来，在袅袅烟火中低声祈愿。

08 温馨的家

- 抵达新加坡。

导游和司机小费: RMB ¥ 30 每天/每人

备注:

- 全程都以华文讲解。
- 行程次序或会因宗教活动、未曾预见的气候状况有所变动，如有任何改动恕不另行通知。
- 如遇不可预计的气候问题造成航班延误或取消，客人需自己承担因航班延误/取消而产生的所有而外费用。
- 当地旅行社有权视当地的情况更改行程顺序，酒店住宿或膳食。房型是根据酒店的分配本公司不负责所分配型的房型差异。任何叁人房都以折叠式加床为标准。
- 所有订单都以旅游行程宣传册的附带条件和条款为标准。
- 重大活动期间，住店地点可能无法在上述城市内。
- 所有航班如有更改，恕不另行通知。
- 若中英文行程版本出现不符之处，将以华文版本为依据。
- 本公司将不承担任何有危险性活动的责任及风险，因此本公司建议您购买旅游保险，为您的旅游做个保障。

01 DEPARTURE ✈️ LHASA

Meal on Board | Dinner

- Upon arrival, meet and transfer to the hotel for rest.
Hotel: Lhasa

02 LHASA

Breakfast | Lunch | Dinner

- **The Potala Palace** stands majestically atop Red Hill, with its white walls and red structures rising layer upon layer, appearing solemn and sacred under the clear plateau sky. Sunlight glides over the golden rooftops, casting a gentle glow.
- **Jokhang Temple** Square stretches before the ancient temple, where sunlight falls softly on the stone pavement, giving it a warm and timeless atmosphere.
- **Barkhor Street** circles the sacred temple, its stone-paved paths polished smooth and gently shining through the passage of time.
Hotel: Lhasa

03 LHASA 🚌 SHIGATSE

Breakfast | Lunch | Dinner

- **Lhasa** sits high on the plateau, where the sunlight is bright and pure, making the city appear especially clear under the blue sky.
- **Yamdruk Lake** stretches like a ribbon of deep blue among the mountains, with its colors shifting in layers under changing light.
- **Karola Glacier** cascades down the mountainside like a frozen waterfall suspended between sky and earth. Under the sunlight, the ice glows with shades of blue and silver.
- **Manla Reservoir** features crystal-clear blue waters reflecting snow-capped mountains and grasslands, offering a pure and open landscape.
- **Shigatse** lies quietly among mountains and valleys, where the vast highland winds and brilliant sunlight create a serene and expansive atmosphere, with golden rooftops and white walls shimmering in the distance.
Hotel: Shigatse

04 SHIGATSE 🚌 BASONG VILLAGE

Breakfast | Lunch | Dinner

- **Everest Base Camp** is surrounded by towering snow-capped peaks, where clouds and sunlight shift constantly, creating a dramatic and ever-changing landscape.
- **Basong Village** lies between a highland lake and snow mountains, offering a peaceful and pristine environment. The village preserves its traditional Tibetan charm and simple way of life.
Hotel: Basong Village

05 BASONG VILLAGE 🚌 SHIGATSE

Breakfast | Lunch | Dinner

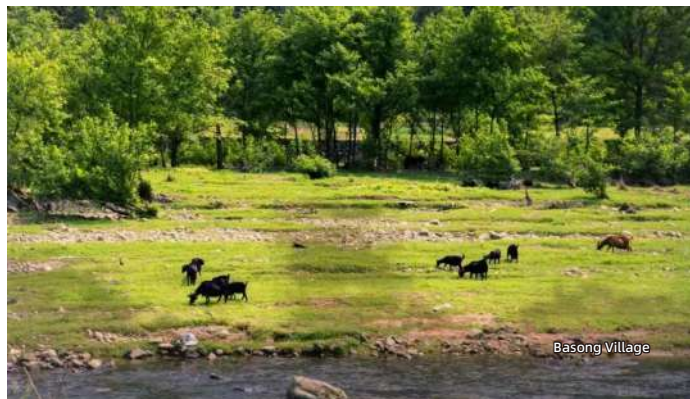
- At **Gawula Pass**, the landscape opens dramatically, with layers of mountains unfolding beneath your feet. In the distance, snow-capped peaks stretch endlessly, while clouds drift slowly across the ridgelines, creating a vast and breathtaking panorama.
Hotel: Shigatse



06 SHIGATSE 🚌 LHASA

Breakfast | Lunch | Dinner

- **Tashilhunpo Monastery** unfolds along the mountainside, with its golden rooftops shining brilliantly under the highland sun. Prayer flags flutter gently in the wind, while the sound of chanting echoes through the courtyards.
Hotel: Lhasa



07 LHASA ✈️ HOME

Breakfast | Lunch

- **Zaki Temple** is a small monastery hidden within the streets of Lhasa, yet always lively with worshippers. Visitors bring barley wine and their wishes, offering quiet prayers amid the drifting incense smoke.



08 HOME SWEET HOME

- Arrive in Singapore.

Guide & Driver Services Fee: RMB ¥30/day/pax

Notes:

- All explanations will be in Chinese.
- The itinerary sequence may be changed due to religious activities or unforeseen weather conditions. Any changes will be made without prior notice.
- In the event of flight delays or cancellations due to unforeseen weather conditions, guests will be responsible for all additional expenses incurred due to flight delays/cancellations.
- The local travel agency has the right to change the itinerary sequence, hotel accommodation or meals according to local conditions. Room types are allocated according to the hotel, and the company is not responsible for the difference in room types allocated. Any triple room is based on a folding extra bed.
- All orders are subject to the terms and conditions of the tour brochure.
- During major events, accommodation may not be available in the above cities.
- All flights are subject to change without prior notice.
- In the event of any discrepancy between the Chinese and English versions of the itinerary, the Chinese version will be used as the basis.
- The company will not assume any responsibility or risk for any dangerous activities. Therefore, our company recommends that you purchase travel insurance to protect your travel.